

PRODUCT SHEET

ADVANTAGES

TRANSPARENT DEPLOYMENT

INTEGRATES
WITH ALL ARCHITECTURES

HIGH AVAILABILITY SOLUTIONS

COMPLETELY
CENTRALIZED MANAGEMENT

AUTOMATED
CONFIGURATION VIA USB KEY

MULTI-TENANT
SUPPORT FUNCTIONALITY

STREAMGROOMER 250, 420, 800, 1600, 3200

STREAMGROOMER MANAGER (SGM)



THE COMPLETE SOLUTION FOR VISIBILITY AND AUTOMATED CONTROL OF APPLICATION PERFORMANCE OVER THE WAN

Streamcore provides solutions for WAN Application Delivery Management to increase visibility and improve control of business-critical applications over the WAN.

The benefits of deploying Streamcore include:

- Analyzing network and application performance
- Guaranteeing the performance of business-critical applications
- Ensuring efficient use of WAN resources to optimize capacity
- Maximizing operational efficiency and simplifying operational procedures

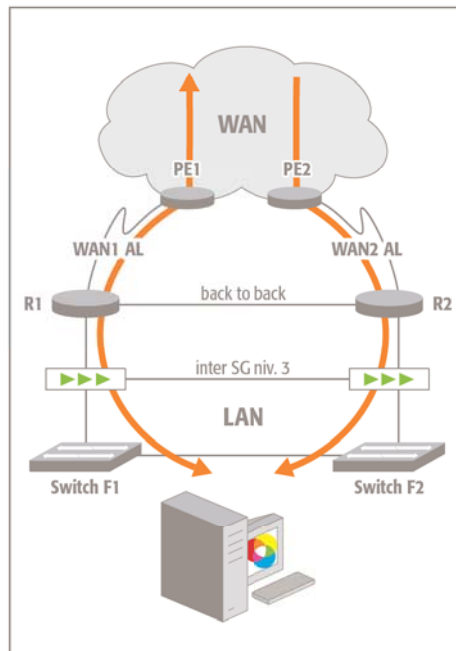
PRODUCTS

The Streamcore solution comprises of traffic management appliances StreamGroomers (SG), StreamGroomer Manager (SGM) for centralized administration and the StreamSense features: management and configuration, real-time monitoring, reporting and performance control. All Streamcore products are delivered pre-installed on appliances.

StreamGroomers integrate transparently regardless of the architecture access (simple, redundant, with 802.1Q trunk, etc.). They are positioned between the LAN and WAN access router (inline or on a tapping device/mirrored port) and are managed through a dedicated port. For high-availability architectures, dual StreamGroomers can be deployed, providing continuous service under any circumstance. Finally, deployment can be automated by simply configuring all the initial settings via a USB key.

SGM and the centralized management applications are accessible from any PC through a Web interface and provide for complete configuration and operational control. This centralized management strengthens the efficiency and simple nature of operational procedures. And it guarantees the reliability and uniform character of application management policies across the board.

Streamcore products offer unique functionalities and flexibility in terms of both technology and service, adapted to every business requirement. Streamcore solutions can be launched on all WAN topologies and technologies: VPN-IP MPLS, VPN-IP IPSec, frame relays, ATM, leased lines, Satellite, and more.



WWW.STREAMCORE.COM

EUROPE:
STREAMCORE

IMMEUBLE AVANT-SEINE
11-15, QUAI DE DION BOUTON
92800 PUTEAUX - FRANCE
TEL: +33 (0)1 47 86 83 10
CONTACT@STREAMCORE.COM

US:

STREAMCORE INC.
6475 CHRISTIE AVENUE - SUITE 425
EMERYVILLE, CA 94608
TEL: +1 510 597 08 70

NORTHAMERICA@STREAMCORE.COM

© 2008 Streamcore - All rights reserved.

KEY FEATURES AND TECHNICAL SPECIFICATIONS

STREAMGROOMERS

- Flow analysis and regulation according to infrastructure and application rules set by the administrator.
- Seamless integration inline between the LAN and the router (inline or on a tapping device / mirrored port).
- Integrated bypass.
- Administration via a dedicated port.
- Initial configuration with a USB key.
- Supports complex architectures: 802.1Q trunk VLAN, redundant access with asymmetric traffic.
- Five models for central sites / PoP and branch office/remote offices depending on the bandwidth required.

STREAMGROOMER MANAGER

- All-in-one device for centralized management of Streamcore solutions.
- Web applications:
 - **StreamView**: configuration, real-time and long-term visibility
 - **StreamReport**: PDF, HTML, CSV, XML reporting
 - **StreamDashboard**: customized dashboards
 - **StreamAccess**: flexible access rights management
- Automatic collect of statistics measured by the StreamGroomers.
- SGM capacity depends on the number of sites and applications to be managed (or a total number of rules).
- Multi-tenant capabilities.

INTEGRATION WITH 3RD-PARTY SOLUTIONS

- Cooperation with QoS operator: Read/Write in the DiffServ field (TOS/DSCP).
- SNMP, MIB II, MIB Bridge and MIB Streamcore agent.
- Alarm generation via SNMP trap.
- Interfacing: Radius, NTP.
- Netflow export.
- Statistics export in CSV, XML.

MODEL	SG 250	SG 420	SG 800	SG 1600	SG 3200
Performance					
Max. bandwidth in QoS	4 Mbps & up/down 1/8 Mbps	45 Mbps	100 Mbps	300 Mbps	1 Gbps
Max. bandwidth in compression	2 Mbps	10 Mbps	45 Mbps	100 Mbps	300 Mbps
Model variation	512 Kbit/s, 2, 4 & 1/8 Mbps	4, 10 and 45 Mbps	20, 45 and 100 Mbps	150 and 300 Mbps	300 Mbps and 1 Gbps
Max. number of TCP sessions	3,000	50,000	100,000	200,000	500,000
Max. bidirectional rules	400	4,000	10,000	25,000	25,000
Size					
Height	3.5 cm	4.3 cm (1U)	4.3 cm (1U)	4.3 cm (1U)	8.9 cm (2U)
Width	22.5 cm	44.5 cm (rack 19')	44.5 cm (rack 19')	44.5 cm (rack 19')	44.5 cm (rack 19')
Depth	15.6 cm	57.4 cm	57.4 cm	57.4 cm	43,5 cm
Weight	1.1 kg	6.05 kg	6.15 kg	6.15 kg	25.9 kg
Power supply					
Strength and type	Internal, 100/244 VAC 50/60 Hz 40 W max	Internal, 100/240 VAC 47/63 Hz 180 W max	Internal, 100/240 VAC 47/63 Hz 320 W max	Internal, 100/240 VAC 47/63 Hz 320 W max	Internal, 100/240 VAC 47/63 Hz Redundant 700 W max
Environment					
Temperature	0 to 40°C	0 to 40°C	0 to 35°C	0 to 35°C	0 to 35°C
Relative humidity	10% to 90% at 40°C	5% to 85% at 40°C	5% to 90% at 20°C	5% to 90% at 20°C	5% to 90% at 20°C
MTBF	> 45,000 hours	> 45,000 hours	> 45,000 hours	> 45,000 hours	> 45,000 hours
Interfaces					
Network interfaces (to LAN/WAN)	2x10/100 Base-T (bypass integrated)	2 or 4x10/100/1,000 Base-T or SX (bypass integrated)	2 or 4x10/100/1,000 Base-T or SX (bypass integrated)	2 or 4x10/100/1,000 Base-T or SX (bypass integrated)	2 or 4'10/100/1000Base-T (bypass integrated)
"Out of band" administration	10/100 Base-T	10/100/1,000 Base-T	10/100/1,000 Base-T	10/100/1,000 Base-T	10/100/1000Base-T
Asynchronous port	RS-232C - DB-9	RS-232C - DB-9	RS-232C - DB-9	RS-232C - DB-9	RS-232C - DB-9
USB port	USB 2.0	USB 2.0	USB 2.0	USB 2.0	USB 2.0
Compliance					
Various	CE, FCC EN60950, EN55022, EN55024	CE, FCC EN60950, EN55022, EN55024	CE, FCC, DOC EN60950, EN55022, EN55024	CE, FCC, DOC EN60950, EN55022, EN55024	CE, FCC, DOC EN60950, EN55022, EN55024

MODEL	SGM R500	SGM R1500	SGM R2000	SGM R4000	SGM R7000	SGM R20K	SGM R30K
Max. number of rules	500	1,500	2,000	4,000	7,000	20,000	30,000
Typical max. number of sites	20	60	100	200	450	1,200	2,000